

PIPE Nr:	LINE SPECIFICATION: CODE ASME/AD 2000...	
----------	--	--

Service;	Hydrocarbons Liquid or gaseous saturated Vapors	Class 150 RF	LINE ISOMETRIC
----------	---	--------------	-----------------------

Maximal operating condtiopns	25 Kg/ cm ² at 39°C or 8 Kg/cm ² at 456°C	Mean MAT: Cast Iron : CS	
------------------------------	---	--------------------------	--

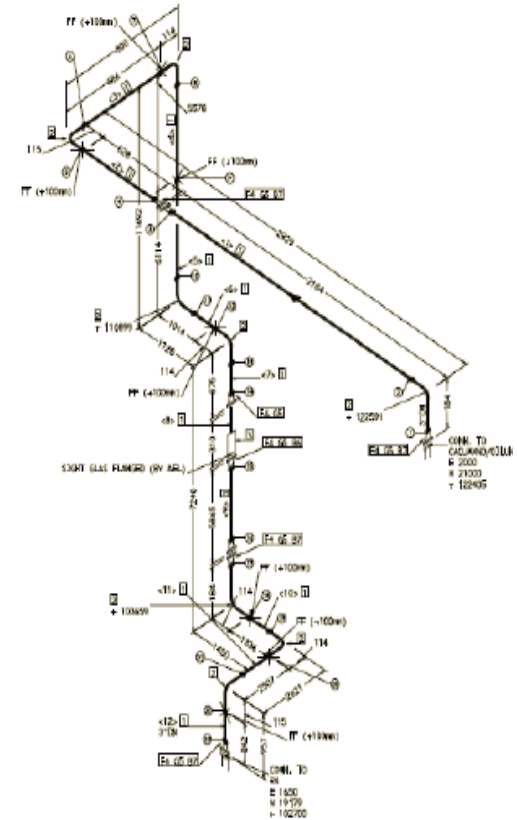
		CORROSION: 1,3 mm	
--	--	-------------------	--

MAT.	Diameter from to	Rating	Connect.	Rings	Pipe Class	DESCRIPTION AND TYPE
------	---------------------	--------	----------	-------	---------------	----------------------

Shutdo wn Valves	1/2"	1 1/2"	600	Thread	A182	Union hat, JP, OSY ,Forged Steel ASTM A105 GR11 Vogt.5.5873.7 or similar Bolted bonnet,cast ASTM A216 GR WCB, Skull 47 X or Similar
	2"	24"	150	Flange	F6	
Safety valves	1/2"	1 1/2"	600	Thread	A182	Union hat, JP, OSY ,Forged Steel ASTM A105 GR11 Vogt.5.5873.7 or similar Bolted bonnet,cast ASTM A216 GR WCB, Skull 143 X or Similar
	2"	8"	150	Flange	F6	
Butterfly & Globe valves	1/2"	1 1/2"	600	Thread	A182	Union Hat, Forged Steel ASTM A105 GR11 Vogt B.9093.7 or Similar Union Hat, Forged Steel ASTM A105 GR11 Vogt 54853.7 or Similar Bolted bonnet,cast , ASTM A216 GR WCB
	1/2"	1 1/2"	600	Thread	F6	
	2"	24"	150	Flange		
Flange	2"	16"	150	Weld.Nut		Raised Face. Forged Carbon Steel. ASTM A181 Gr 1 Alloy following schedule of the tubes. Raised face, Forged Carbon Steel ASTM A 181 Gr 1
	18"	24"	150	FF		
Connect ion	1/2"	1 1/2"	3000	Flange		Forged carbon steel ASTM A101 Gr 11 Seamless drawn steel ASTM 4223 WPA. Schedule according to the tubes Rolled sheet steel welded Astma 155 Gr C 55 Thickness: 9.52 mm.
	2"	16"		Butt Wel		
	18"	24"		Butt Wel Flange		
Union	1/2"	1 1/2"				Bolting FF. Forged steel A155 Gr 2 threaded Briggs Tapered ball joints. 3000 Series
TUBES	1/2"	1 1/2"				Carbon steel, seamless drawn. Sch: 80, threaded ends Carbon steel, seamless drawn. Sch: 40, threaded ends Chamfered ends: A106 GrA
	2"	24"				

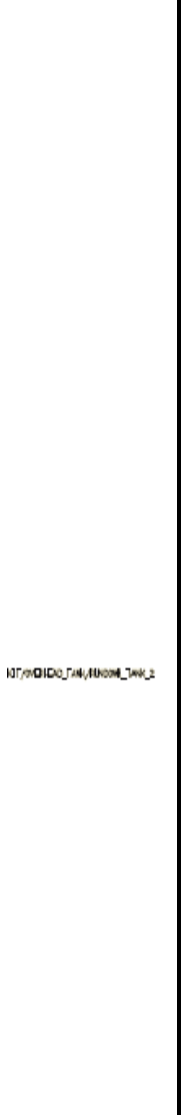
BOLTING	Threaded rod, not IF, Steel ASTM A 193 Gr B7 Hh hex nuts. Steel ASTM A194 Gr 2H
---------	--

JOINTS	Asbestos and synthetic rubber or similar Joinfranite 796
--------	--



Joints

Thickness, 1.5 mm When $\varnothing \leq 18''$ and 3 mm when $\varnothing \geq 20''$



07/01/00_04/1000_0000

